



Overview

Bleeding disorders are a group of disorders that share the inability to form a proper blood clot and can be present in adolescents and young adults. They are characterized by extended bleeding after injury, surgery, trauma or menstruation. Evaluation of adolescent girls who present with heavy menstrual bleeding should include assessment for underlying causes and evaluation for the presence of a bleeding disorder. Treatment for blood disorders vary, depending on the patient's age, condition and severity. This activity is designed to discuss the diagnosis and management of bleeding disorders that present in adolescents with an emphasis on managing menstrual bleeding in these disorders.

Visit www.eehcme.org.

Click on  activities.

Objectives

At the conclusion of this live activity, participants will be able to:

- Identify patients that are likely to have a bleeding disorder.
- Review appropriate indications for referral to a hematologist for the diagnosis of adolescent bleeding disorders.
- Discuss proper management of menstrual bleeding disorders in the adolescent and young adult population.



Illinois
State
Medical
Society

Edward-Elmhurst Health is accredited by the Illinois State Medical Society (ISMS) to provide Continuing Medical Education credit to physicians. Edward-Elmhurst Health designates this live activity for a maximum of **1.5 AMA PRA Category 1 Credit(TM)**. Physicians should claim only the credit commensurate with the extent of their participation in the activity.

Annual Charles Rubin Pediatric Program ENDURING ONLINE

Adolescent and Young Adult Bleeding Disorders

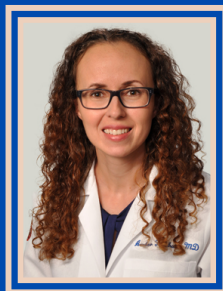
Originally Presented:
October 7, 2020
8:00-9:30 AM



Speakers

Amber Truehart, MD
Assistant Professor of Obstetrics and
Gynecology | University of Chicago Medicine

Dr. Truehart is an expert in pediatric and adolescent gynecology. She specializes in the diagnosis and treatment of a wide range of gynecologic conditions affecting infants, girls, teens and young women, such as painful or heavy menstrual bleeding, labial adhesions and vulvar disorders. Dr. Truehart provides preventive and routine care for girls and young women up to age 26. Dr. Truehart educates and empowers women to understand their medical conditions and make healthy choices. She also serves as a resource for local pediatricians and gynecologists who have questions about complicated adolescent gynecological problems. Her clinical interests include contraception for women with complex medical issues who prefer to avoid pregnancy for personal or medical reasons. Also a dedicated researcher, Dr. Truehart is currently investigating methods to effectively educate residents and other healthcare providers on emergency contraception and adolescent sexual health.



Gabrielle Lapping-Carr, MD
Assistant Professor of Pediatrics |
University of Chicago Medicine

Dr. Lapping-Carr provides care for children with benign and malignant hematologic disorders, patients with primary immune deficiencies, myelodysplasias, sickle cell disease, congenital bone marrow disorders and leukemia or lymphoma who are undergoing stem cell transplantation. An active researcher, Dr. Lapping-Carr and her colleagues developed the Chicago Sickle Cell Research Group. As part of this group, she has provided personalized care to this high risk group and established an extensive database of samples from patients with sickle cell anemia. Her goal is to understand the variation in lung pathology across people with sickle cell disease and to use this information to develop novel therapies.



Visit www.eehcme.org.

Click on  activities.